



SmartFlex™

Pediatric Cranial Spring Distraction System

Adjustable to **accommodate various skull anatomies**



Beveled to **reduce the possibility of dural tear**



# Minimally Invasive Pediatric Spring Assisted Surgery

# SmartFlex™ Pediatric Cranial Spring Distraction System

SmartFlex is a pediatric cranial spring distraction system featuring preformed cranial springs. It is manufactured with medical-grade stainless steel, with beveled foot plates that are designed to fit securely under the skull bone. The springs are adjustable to accommodate various skull anatomies.



## Spring Selection

### Cranial Springs

SmartFlex SPRING NC - 4 N

SmartFlex SPRING NC - 4.5 N

SmartFlex SPRING NC - 5 N

SmartFlex SPRING NC - 5.5 N

SmartFlex SPRING NC - 6 N

SmartFlex SPRING NC - 6.5 N

SmartFlex SPRING NC - 7 N

SmartFlex SPRING NC - 7.5 N

SmartFlex SPRING NC - 8 N

SmartFlex SPRING NC - 8.5 N

SmartFlex SPRING NC - 9 N

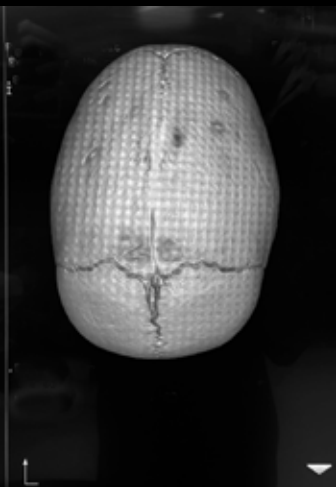
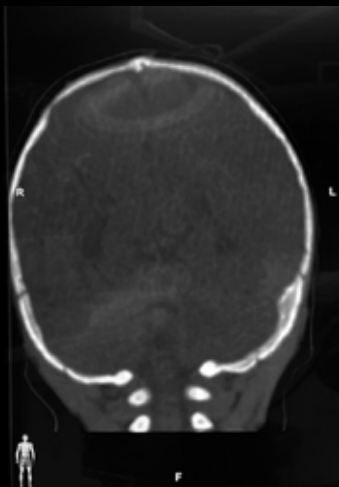
SmartFlex SPRING NC - 9.5 N



Rongeur



Spring Cutter



View More X-rays

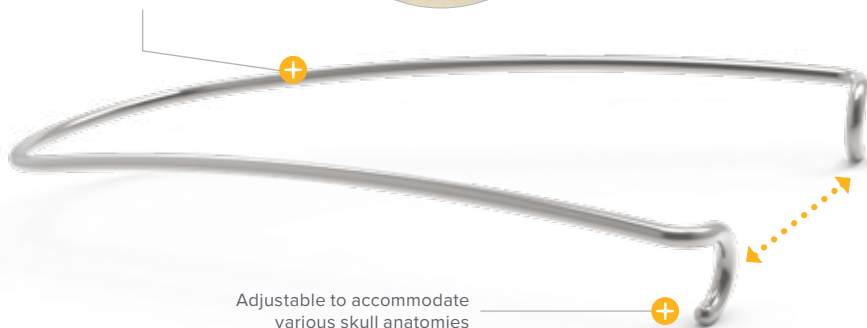
[go.acumed.net/SmartFlex-xray](https://go.acumed.net/SmartFlex-xray)

## System Features



Pre-formed based on an extensive analysis of infant skull

Medical grade stainless steel



Adjustable to accommodate various skull anatomies

Contact Your Local Sales Rep for More Information



Learn More About SmartFlex™

Minimally Invasive Pediatric  
Spring Assisted Surgery  
[go.acumed.net/SmartFlex](https://go.acumed.net/SmartFlex)



[www.acumed.net](https://www.acumed.net)

Acumed USA Campus  
5885 NE Cornelius Pass Road  
Hillsboro, OR 97124  
+1.888.627.9957

OsteoMed USA Campus  
3885 Arapaho Road  
Addison, TX 75001  
+1.800.456.7779

Acumed Iberica Campus  
C. Proción, 1  
Edificio Oficor  
28023 Madrid, Spain  
+34.913.51.63.57

**NRS00-00-A** | Effective: 2024/07 | © 2024 Acumed® LLC

OsteoMed® LLC is a wholly owned subsidiary of Acumed LLC.  
OsteoMed and SmartFlex™ are registered trademarks of OsteoMed LLC.

Acumed® is a registered trademark of Acumed LLC.